

Cruse & Associates

From: "Cruse & Associates" <cruseandassoc@kvalley.com>
Date: Thursday, January 03, 2019 10:10 AM
To: "FILE"
Subject: Three Bar G Boundary Line Adjustment

Narrative – 2 lot boundary line adjustment of tax parcel numbers 722633 and 732633 that adjusts the existing boundary to match the existing canal and will make TPN 722633 larger and more conforming. TPN 732633 is agricultural lands with an existing home and outbuildings at 4510 S. Thorp Hwy. TPN 722633 is undeveloped. The proposed boundaries will meet all setbacks required by zoning code. See application maps for full details.

Existing Descriptions:

A portion of Section 30, T 18 N, R 18 E, WM. See title report for full description.

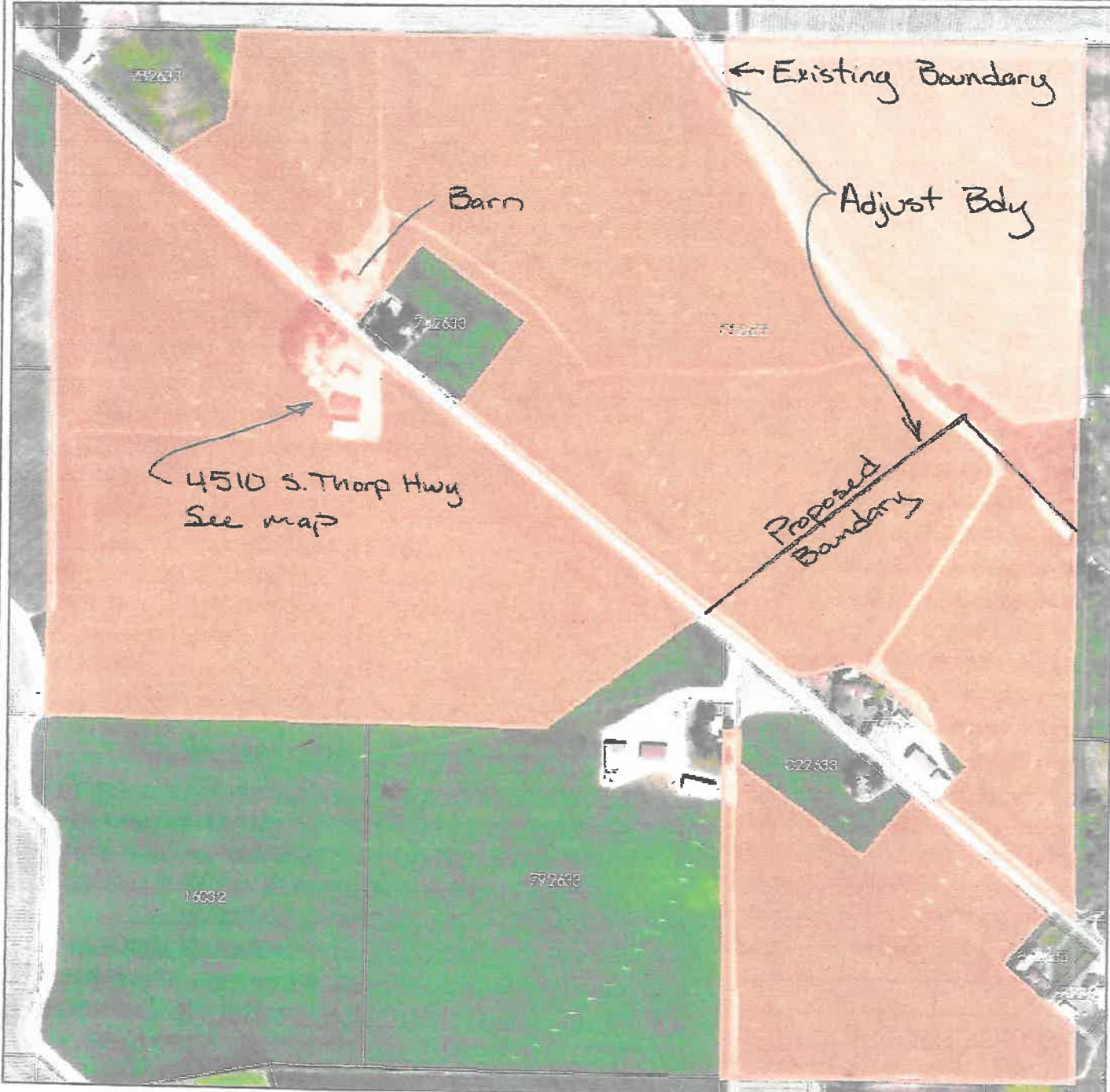
Proposed Descriptions:

Lot A and B of the survey to be recorded after initial BLA application review and authorization to record has been granted by the planner.

Thanks,
Chris Cruse P.L.S.
Cruse and Associates
217 East 4th Ave.
P.O. Box 959
Ellensburg, WA 98926
(509) 962-8242 Office
(509) 962-8238 Fax
cruseandassoc@kvalley.com

Kittitas County COMPAS Map

Site Plan



Date: 1/3/2019

1 inch = 752 feet
Relative Scale 1:9,028

Disclaimer:
 Kittitas County makes every effort to produce and publish the most current and accurate information possible. No warranties, expressed or implied, are provided for the date, its use, or its interpretation. Kittitas County does not guarantee the accuracy of the material contained herein and is not responsible for any use, misuse or representations by others regarding this information or its derivatives.

TPN's 722633 and 732633



Exhibit B

Site Plan 3 of 5

THREE BAR G RANCH
PROPOSED PARCEL #722633



SCALE: 1"=200'

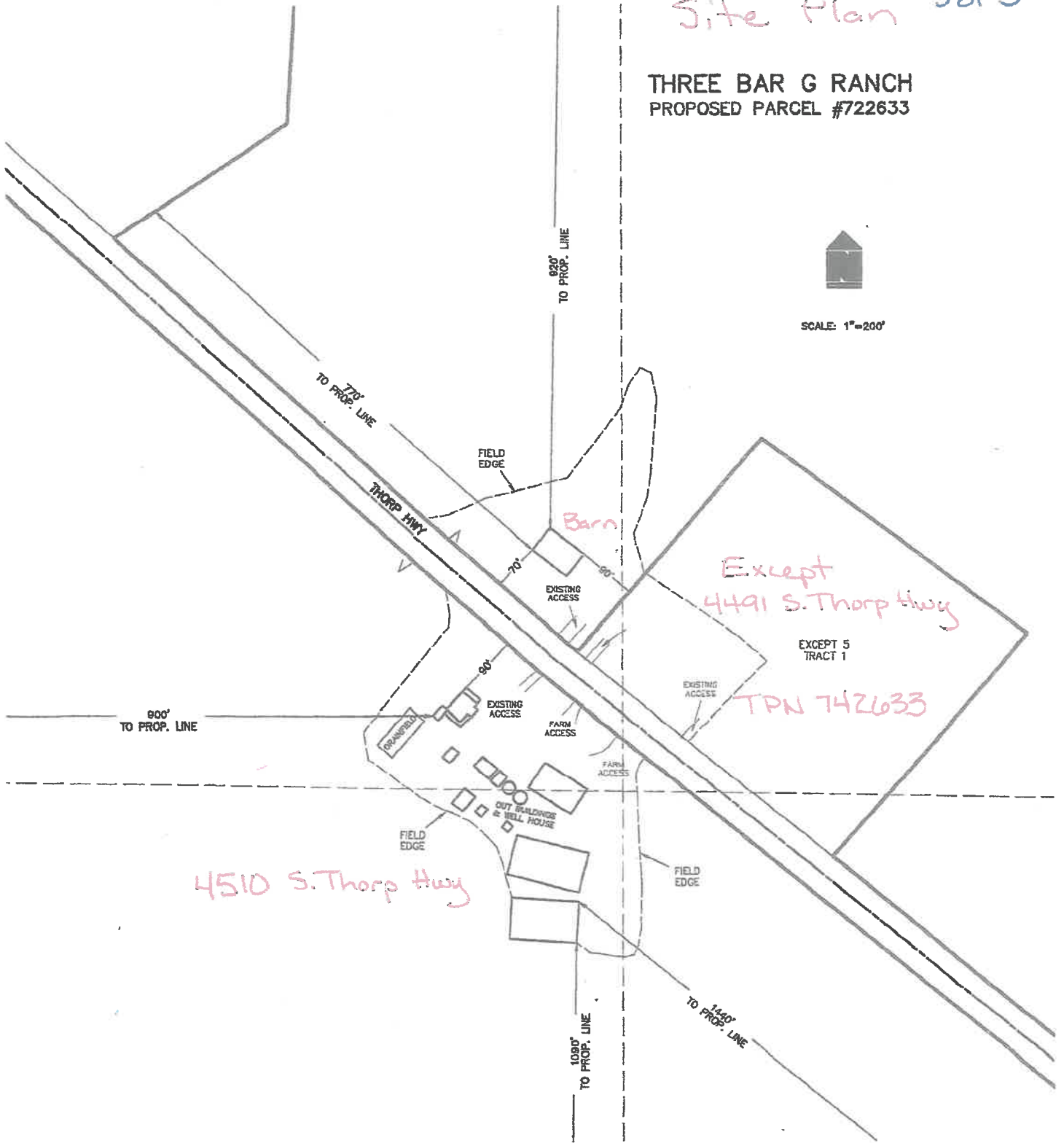


Exhibit B

4 of 5
EXISTING

722633

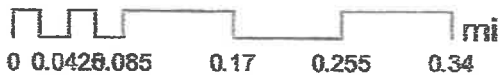
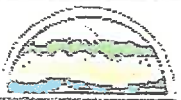
732633

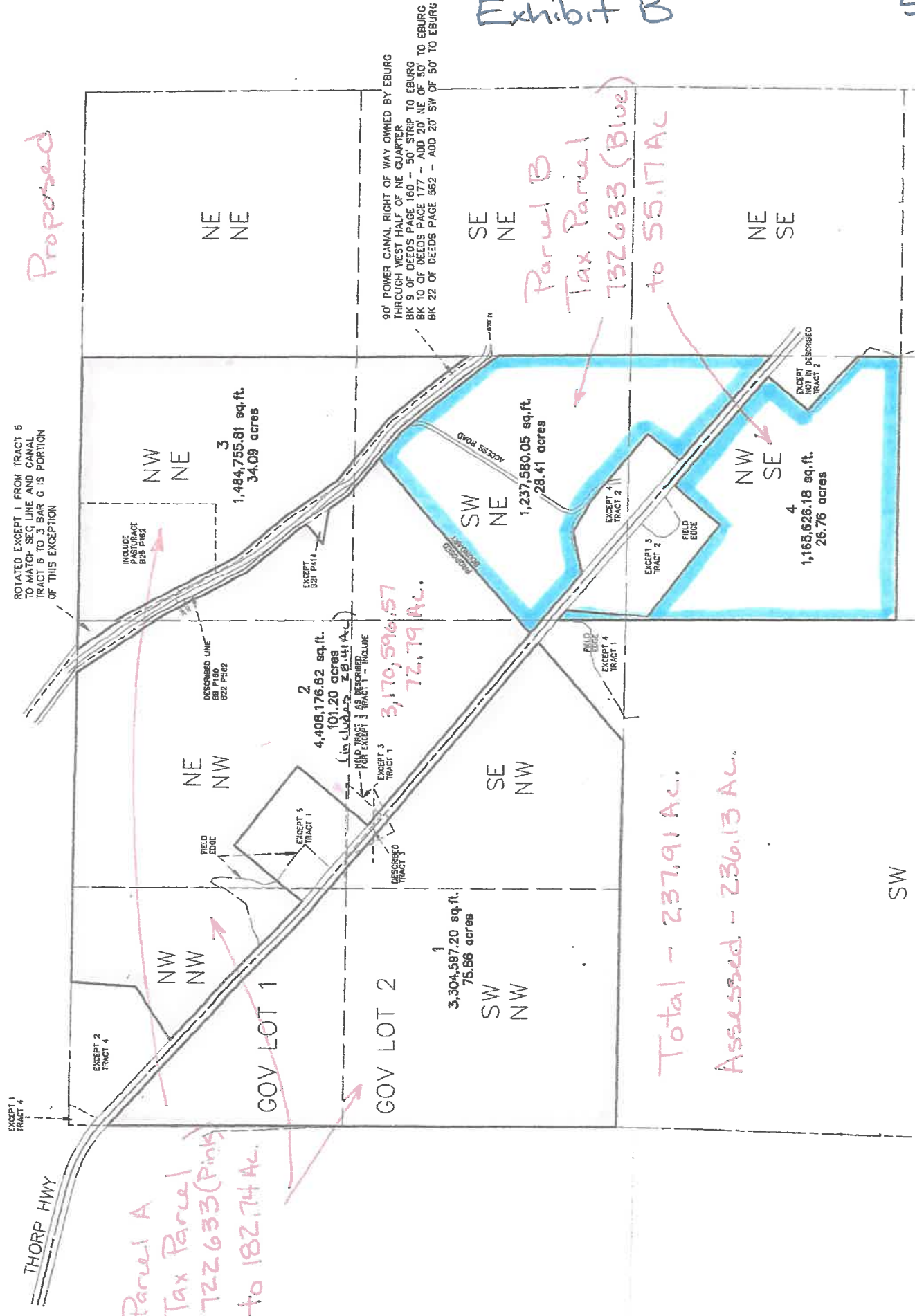
Date: 10/6/2017

1 inch = 752 feet
Relative Scale 1:9,028

Disclaimer:

Kittitas County makes every effort to produce and publish the most current and accurate information possible. No warranties, expressed or implied, are provided for the data, its use, or its interpretation. Kittitas County does not guarantee the accuracy of the material contained herein and is not responsible for any use, misuse or representations by others regarding this information or its derivatives.





Proposed

Parcel B
Tax Parcel
732,633 (Blue)
to 55.17 Ac

3,170,596.57
72.79 Ac.

Total - 237,911 Ac.
Assessed - 236,13 Ac.

ROTATED EXCEPT 1 FROM TRACT 5 TO MATCH SEC LINE AND CANAL TRACT 6 TO 3 BAR G IS PORTION OF THIS EXCEPTION

INCLUDE EAST TRACT BE-3-1062

DESCRIBED LINE ON P180 922 P502

EXCEPT 2 TRACT 1 - INCLUDE FIELD TRACT 3 AS DESCRIBED FOR EXCEPT 3 TRACT 1

EXCEPT 3 TRACT 1

DESCRIBED TRACT 3

EXCEPT 5 TRACT 1

FIELD EDGE

EXCEPT 4 TRACT 1

FIELD EDGE

EXCEPT 3 TRACT 2

EXCEPT 2 TRACT 2

EXCEPT 1 TRACT 2

EXCEPT 4 TRACT 1

EXCEPT 3 TRACT 2

EXCEPT 2 TRACT 2

EXCEPT 1 TRACT 2

EXCEPT 4 TRACT 2

EXCEPT 3 TRACT 2

EXCEPT 2 TRACT 2

EXCEPT 1 TRACT 2

EXCEPT 4 TRACT 2